

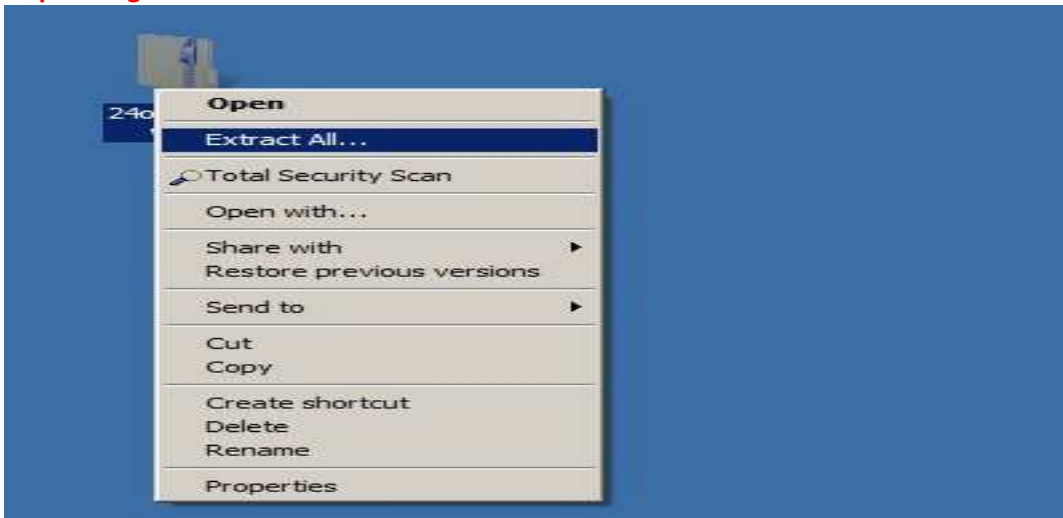
After configuring the IP address please download the client exe file for login purpose. The client exe file is available on our website i.e. sinetonline.com.

Step-1 : Download the software on your desktop preferable.

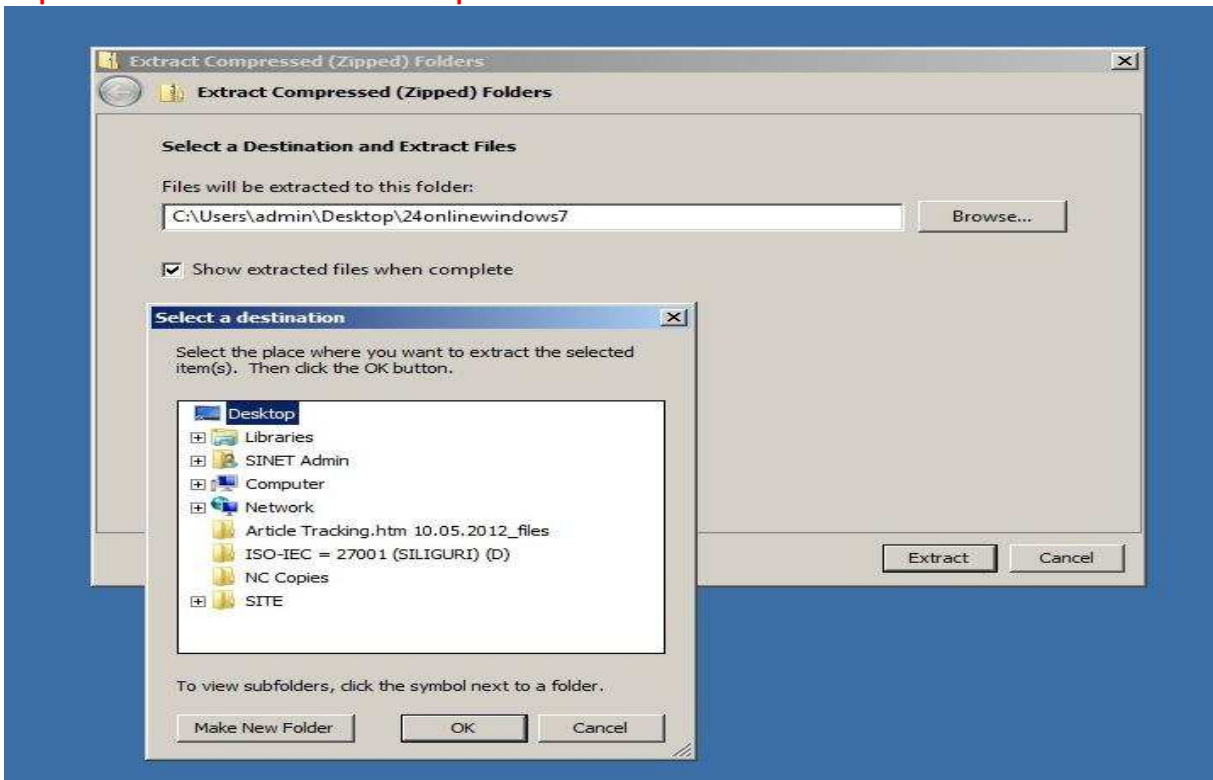
Step-2 : Follow the below mention process to extract the client exe file.



Step-3 : Right click on the downloaded software click on Extract All



Step-4 : Browse the location to Desktop then click OK then Click Extract.



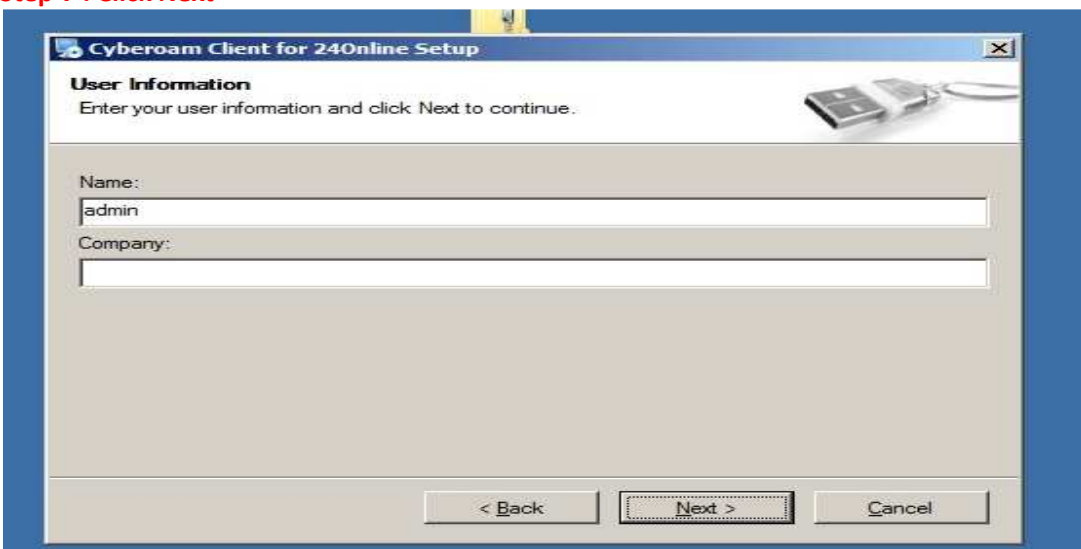
Step-5: Double Click the Extracted client exe file to start the installation.



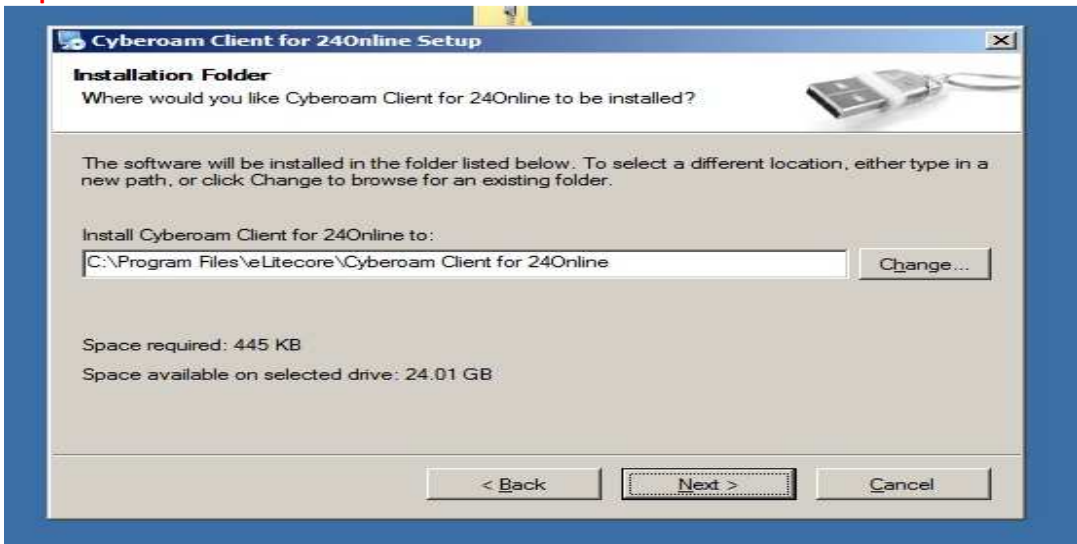
Step-6: Click Next



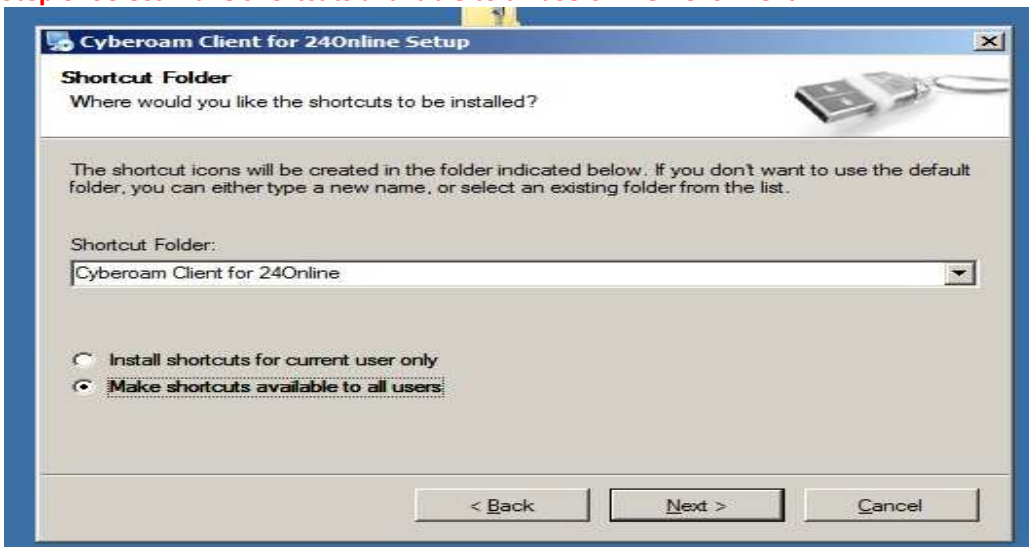
Step-7 : Click Next



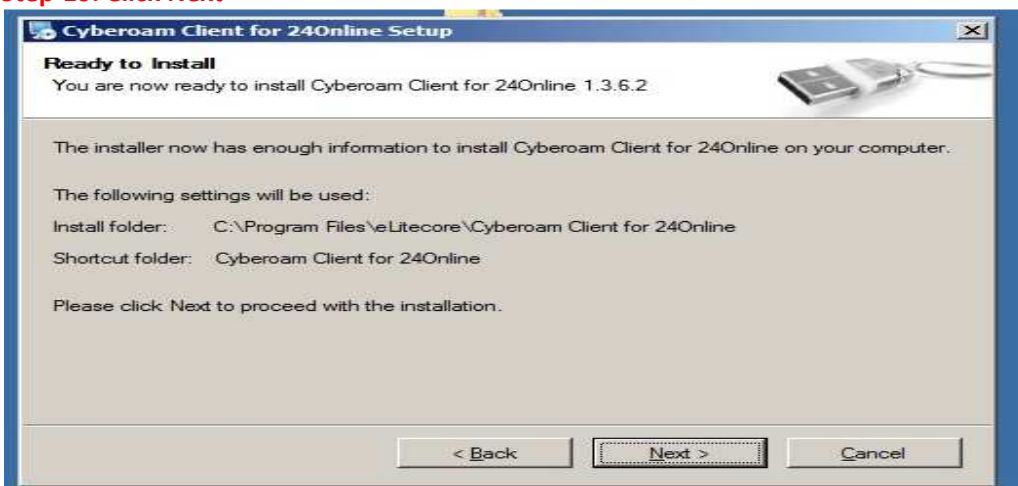
Step-8 : Click next



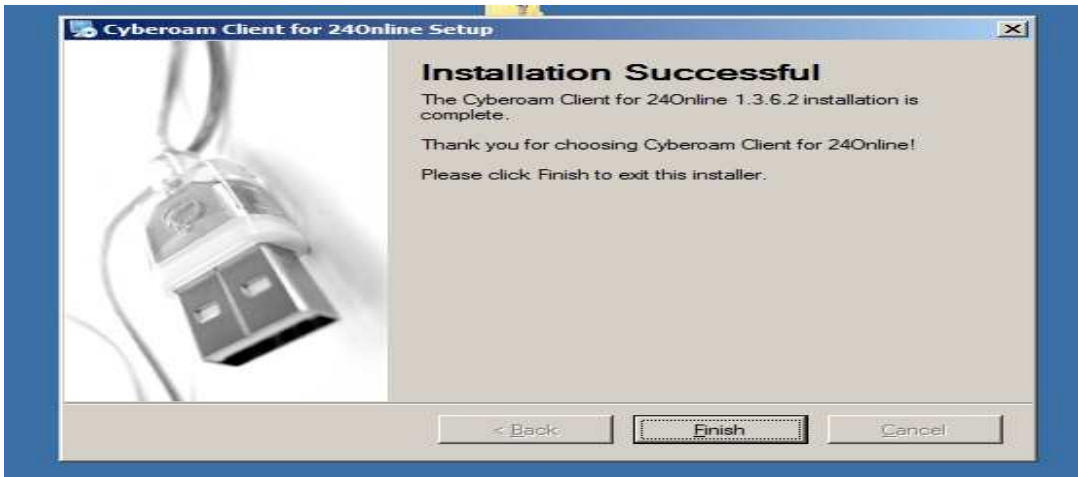
Step-9: Select Make shortcuts available to all users. Then Click next.



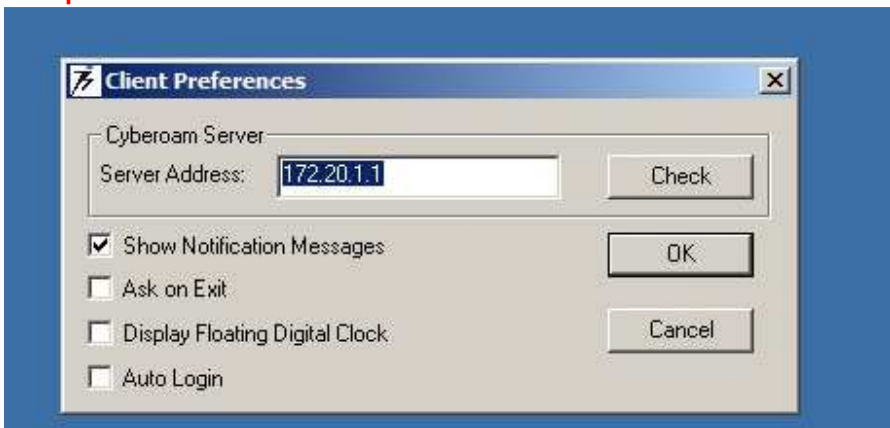
Step-10: Click Next



Step-11: Click Finish



Step-12: Please put server IP. Please ask our helpdesk for valid server IP the IP shown on the image is for example.



Step -13: Double click the 24 online client shortcut and put your user name and password.

