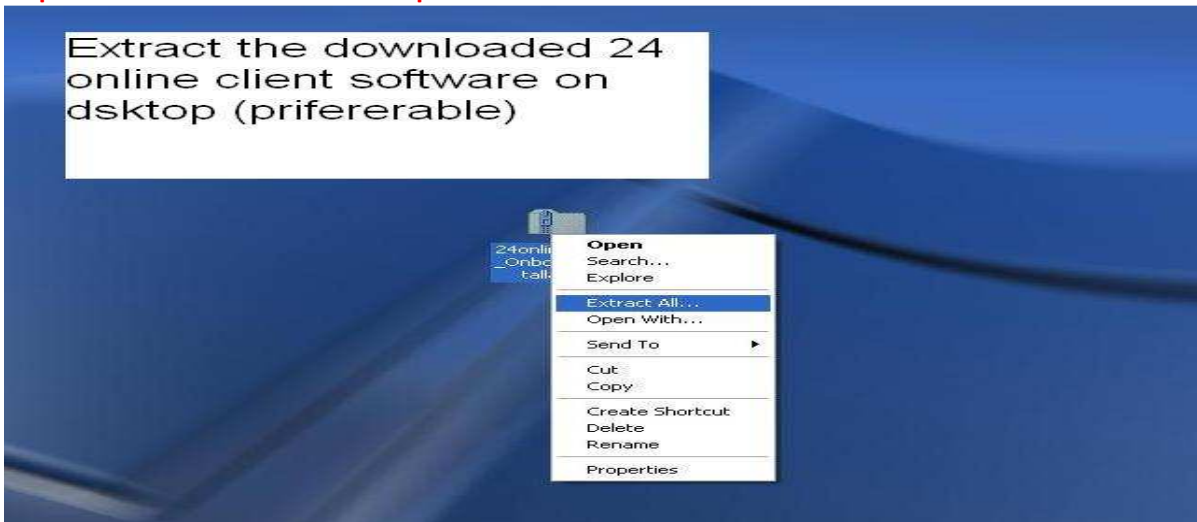


After configuring the IP address please download the client exe file for login purpose. The client exe file is available on our website i.e. sinetonline.com.

Step-1 : Download the software on your desktop preferable.

Step-2 : Follow the below mention process to extract the client exe file.



Step-3 Click next



Step-4: Browse the location to your desktop and then click ok then NEXT.



Step-5 Click Finish

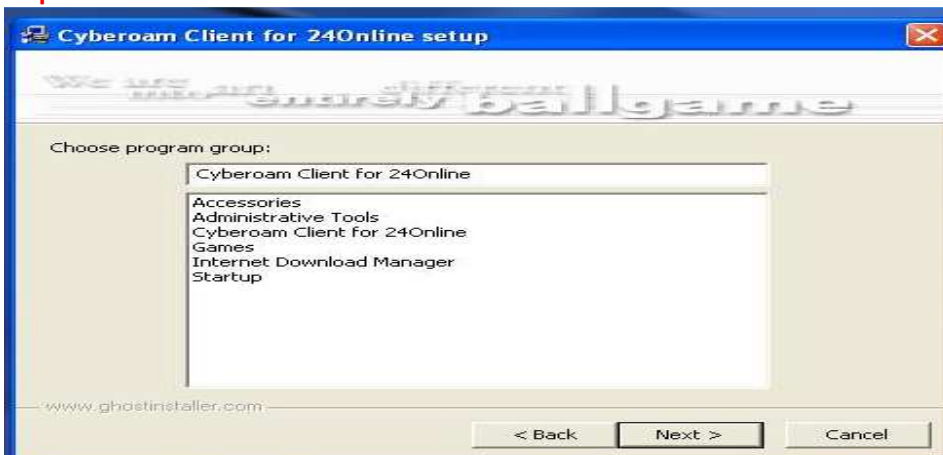


Step-6 Step -

6: Click next to start the installation process.



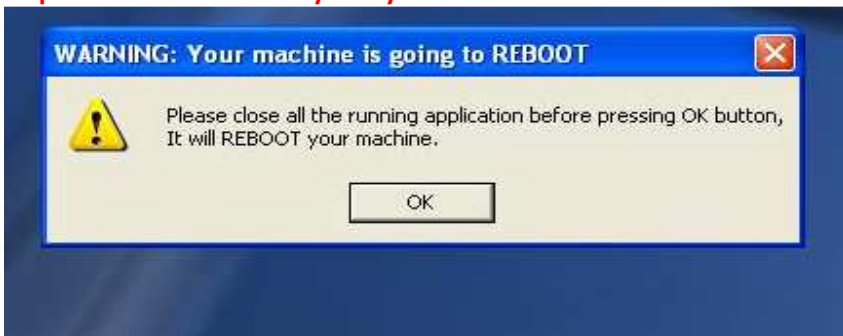
Step-7 Click Next



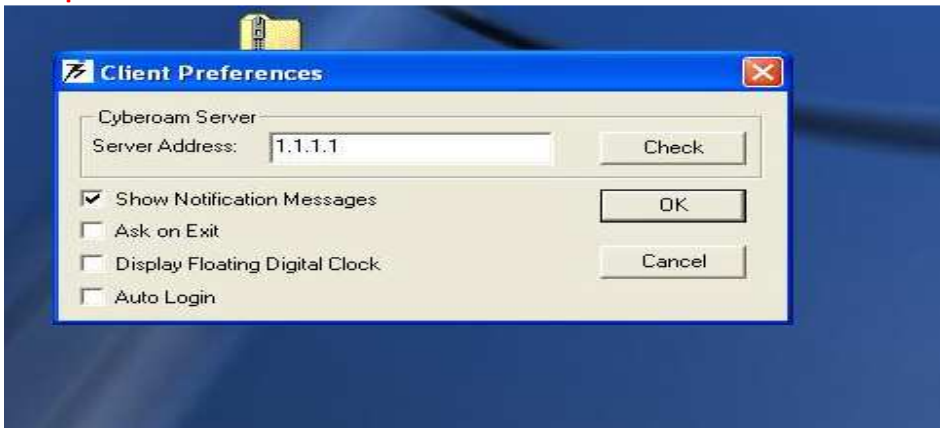
Step-8 Click next



Step -9 Click ok to reboot your system.



Step-10: Please put server IP. Please ask helpdesk for valid server IP the IP shown on the image is for example.



Step-11: Click ok when you get the message Cyberoam server found



Step-12: Click ok then you get client login option put your username and password.

